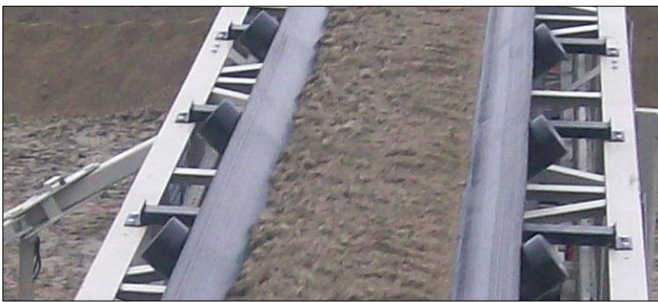




SPECIFICATION

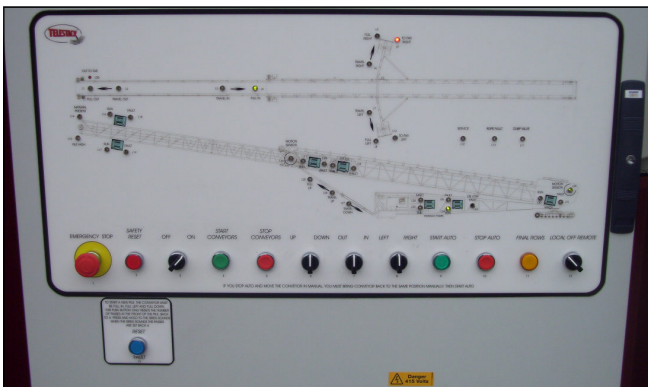
- 500 Tph @ 1.6T/m³
- 900mm (36") wide belting
- 42 metre (140ft) length conveyor
- **Heavy duty** lattice frame design (Undercarriage, Outer and Inner conveyor)
- Direct shaft mounted bevel helical gearbox with direct coupled electric drive motor.
- Allen Bradley electric control panel c/w full fault diagnostics and control
- Optional Automatic Stockpiling program
- Stockpile capacity up to 91,785 tonnes (100,965 ton) (Based 1.6 t/m³)
- Optional wheels / driven tracks for mobility



900mm (36") wide EP 500 3 ply belting



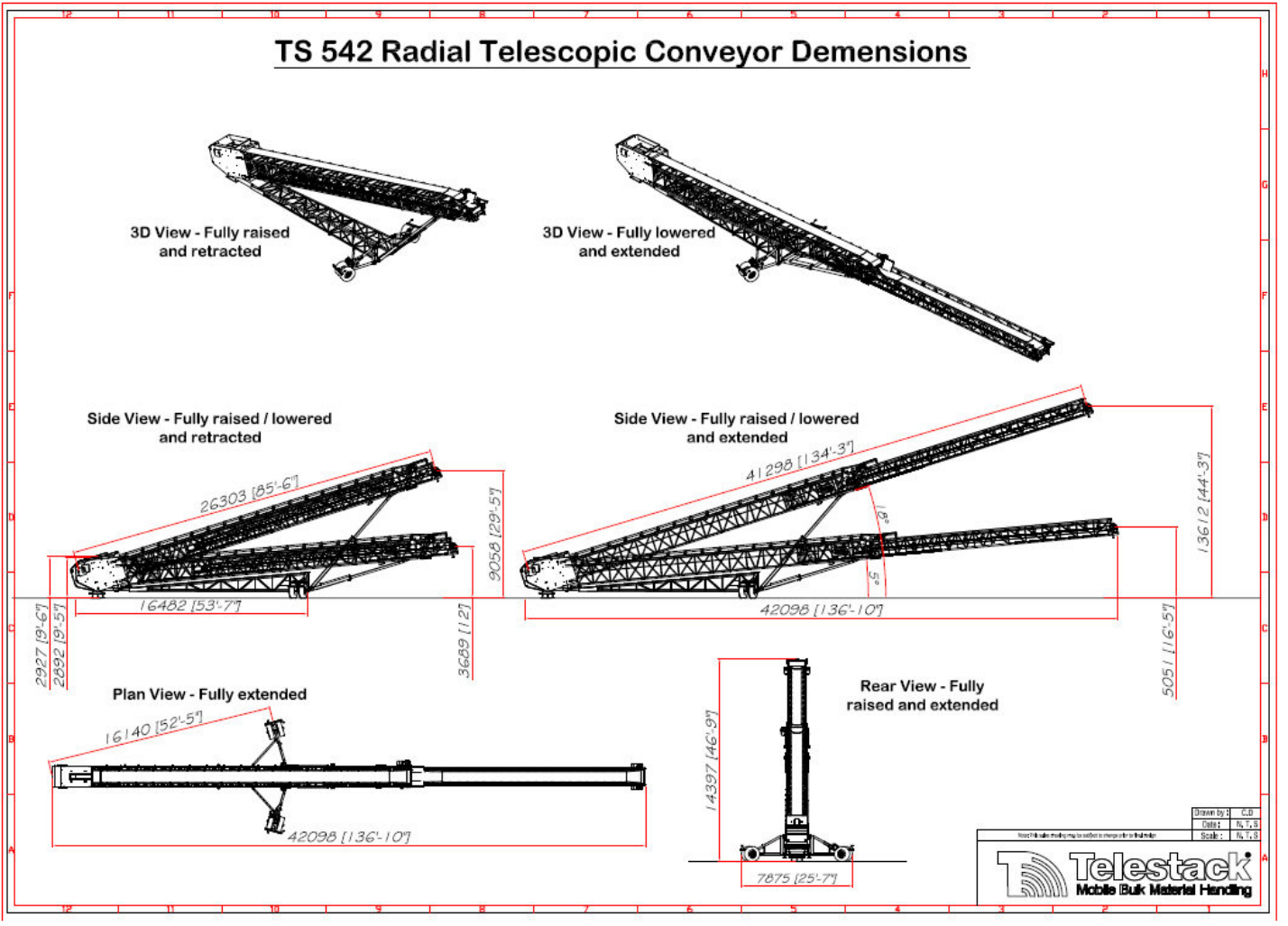
Heavy Duty lattice frame design



Allen Bradley - Diagnostics Control Panel



Optional Tracks and Gen-set for all functions



Packed into 3 x 40ft Containers for shipping globally (1 x Extra 40ft for tracks + genset)

STOCKPILE CAPACITIES

Stockpile Capacities	Tonne (Metric)	M3 (Metric)	Ton (Imperial)	Yrds 3 (Imperial)
Conical Stockpile	6,800	4,250	7,480	5,559
Conical Telescopic	8,195	5,120	9,015	6,700
@ 90 degrees	36,060	22,535	39,665	29,475
@ 120 degrees	45,345	28,340	49,880	37,070
@ 180 degrees	63,920	39,950	70,315	52,255
@ 270 degrees	91,785	57,365	100,965	75,030

Distributed by:



For Further Information
Telestack Limited
www.telestack.com
 Tel: +44 (0) 2882 251100
 Email: info@telestack.com

THE POWER TO MOVE MATERIALS™